

# HOMESITE 25

## RESIDENCE FOUR



# AZURE

Inspired by paradise.

~5,108 Sq. Ft.

3 Bedrooms

5 Full Baths

2 Powder Rooms

Detached  
Upper Casita &  
Lower Level Office  
(additional 880 Sq. Ft.)

3 Car Garage

**Estimated  
Completion  
Winter of 2023**

Exterior oversized corner homesite  
Amazing Lower Level living/Entertainment Area  
Gourmet Kitchen with Gaggenau Appliances  
Ownby Interior Selections Completed  
23' Extended Walkout Lower Level  
Full Wet bar & Wine room in Lower Level  
Private Outdoor Workout Space with Spa  
Creative Environments Pool & Landscaping Plans  
Lutron Lighting included with Savant Brain



480.367.3675  
[azurepvliving.com](http://azurepvliving.com)

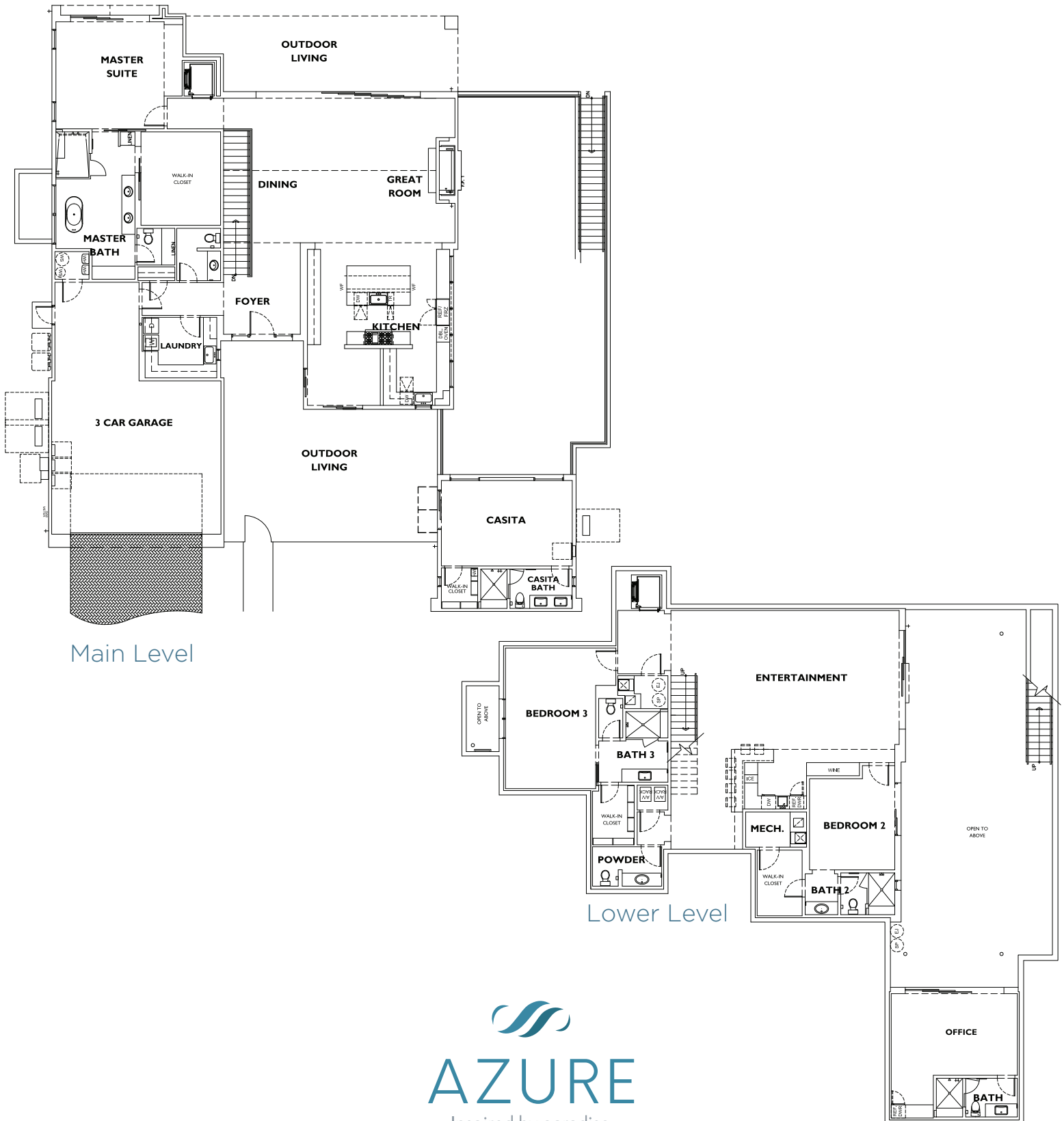


Sales: Shea Homes Marketing Company (AZ DRE #CO550381000). Construction: Shea Homes Limited Partnership (ROC 195895). This is not an offer for real estate for sale, nor solicitation of an offer to buy to residents of any state or province in which registration and other legal requirements have not been fulfilled. A PUBLIC REPORT IS AVAILABLE ON THE STATE REAL ESTATE DEPARTMENT WEBSITE. Pricing does not include options, elevation, or lot premiums, effective date of publication and subject to change without notice. All square footages and measurements are approximate and subject to change without notice. Features and plans subject to change without notice. Windows and doors may vary per elevation. Floor plans, maps and renderings are artist's conception based on preliminary information, not to scale and subject to change. Trademarks are property of their respective owners. Equal Housing Opportunity.

# HOMESITE 25

## RESIDENCE FOUR

5,108 Sq. Ft. | 3 Bedrooms | 5 Full Baths + 2 Powder Room Baths | 3 Car Garage  
Detached Upper Casita & Lower Level Office (additional 880 Sq. Ft.)



  
**AZURE**  
Inspired by paradise.

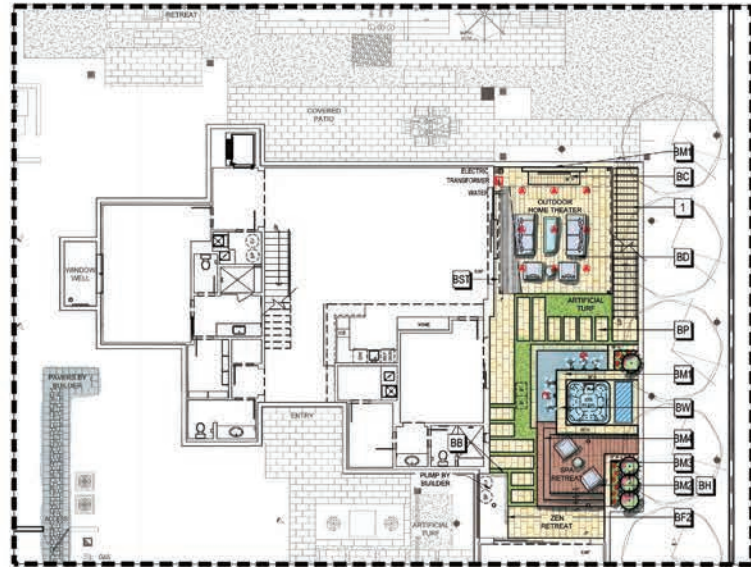
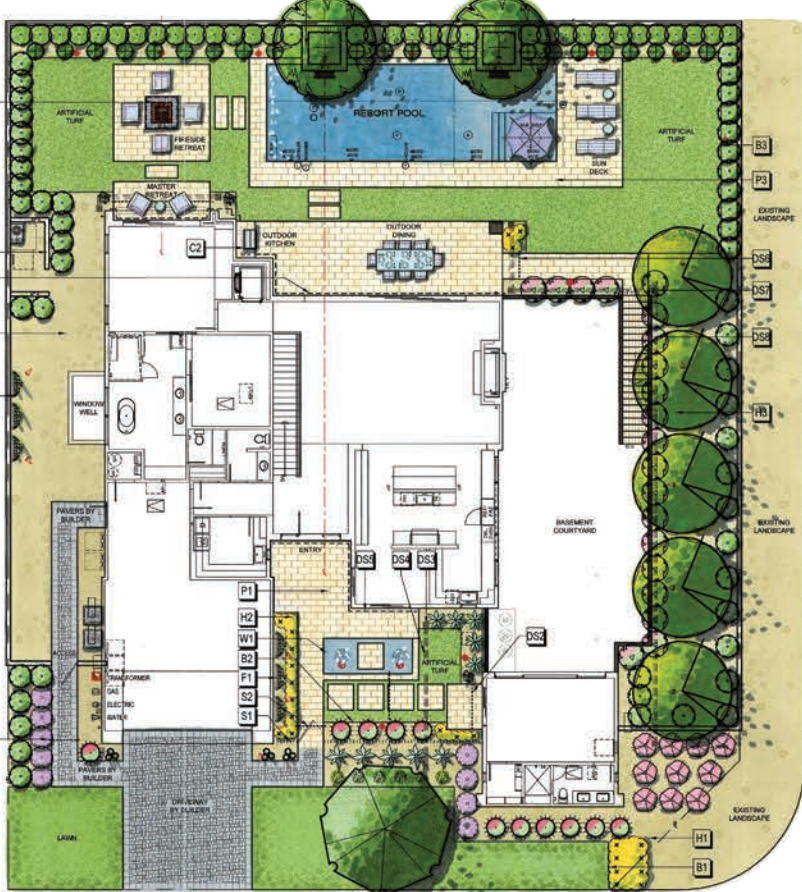


Sales: Shea Homes Marketing Company (AZ DRE #CO550381000). Construction: Shea Homes Limited Partnership (ROC 195895). This is not an offer for real estate for sale, nor solicitation of an offer to buy to residents of any state or province in which registration and other legal requirements have not been fulfilled. A PUBLIC REPORT IS AVAILABLE ON THE STATE REAL ESTATE DEPARTMENT WEBSITE. Pricing does not include options, elevation, or lot premiums, effective date of publication and subject to change without notice. All square footages and measurements are approximate and subject to change without notice. Features and plans subject to change without notice. Windows and doors may vary per elevation. Floor plans, maps and renderings are artist's conception based on preliminary information, not to scale and subject to change. Trademarks are property of their respective owners. Equal Housing Opportunity.



# HOMESITE 25

## RESIDENCE FOUR

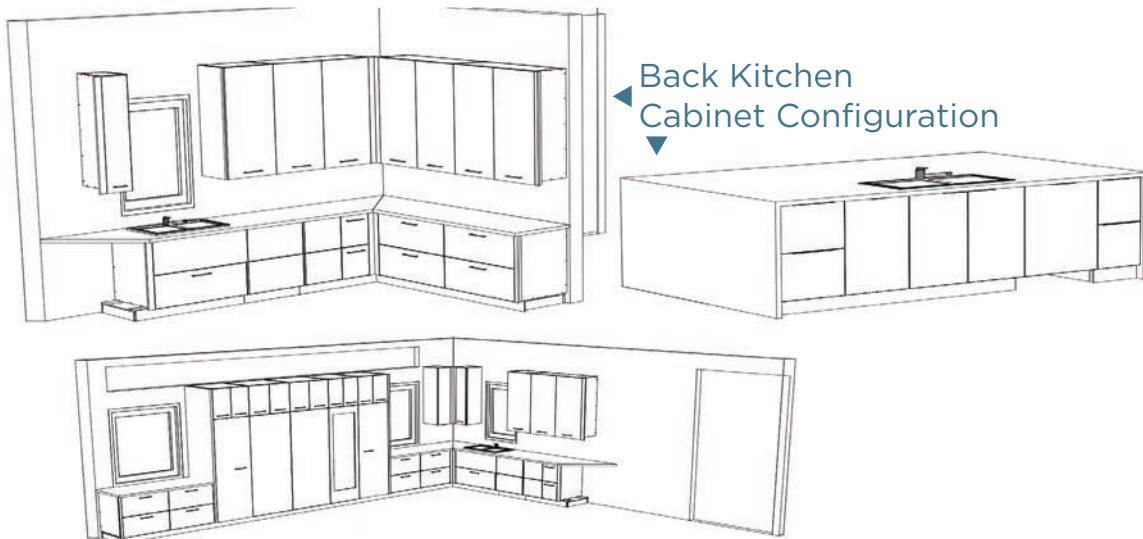
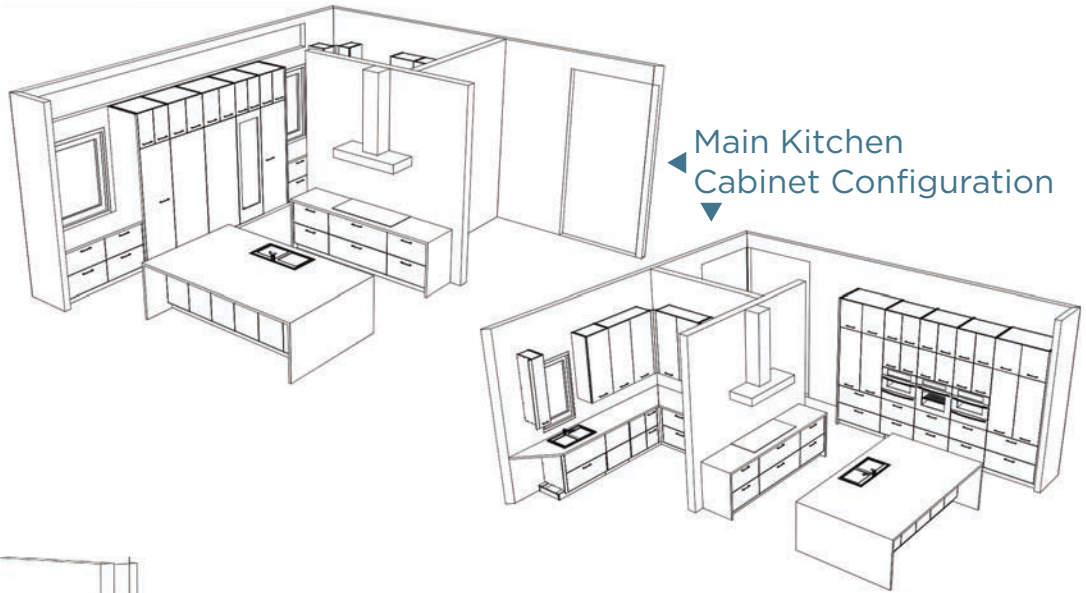


BASEMENT PLAN



# HOMESITE 25

## RESIDENCE FOUR



Wine Cellar

