

# HOMESITE 66 RESIDENCE THREE



\*Detached Casita shown is not included, see Community Representative for details.

  
**AZURE**

Inspired by paradise.

~4,367 Sq. Ft.

3 Bedrooms

3 Full Baths

1 Powder Room

3 Car Garage

**Estimated Completion  
Spring of 2023**

- Basement Home
- Elevator with Birch Interior
- Patio Heaters
- Extended Wet Bar in Lower Level
- Homesite Faces North



**PRICED AT: \$3,600,000**

Includes Base Price & Lot Premium  
Does not include Interior Selections, Electrical, Landscaping or Pool

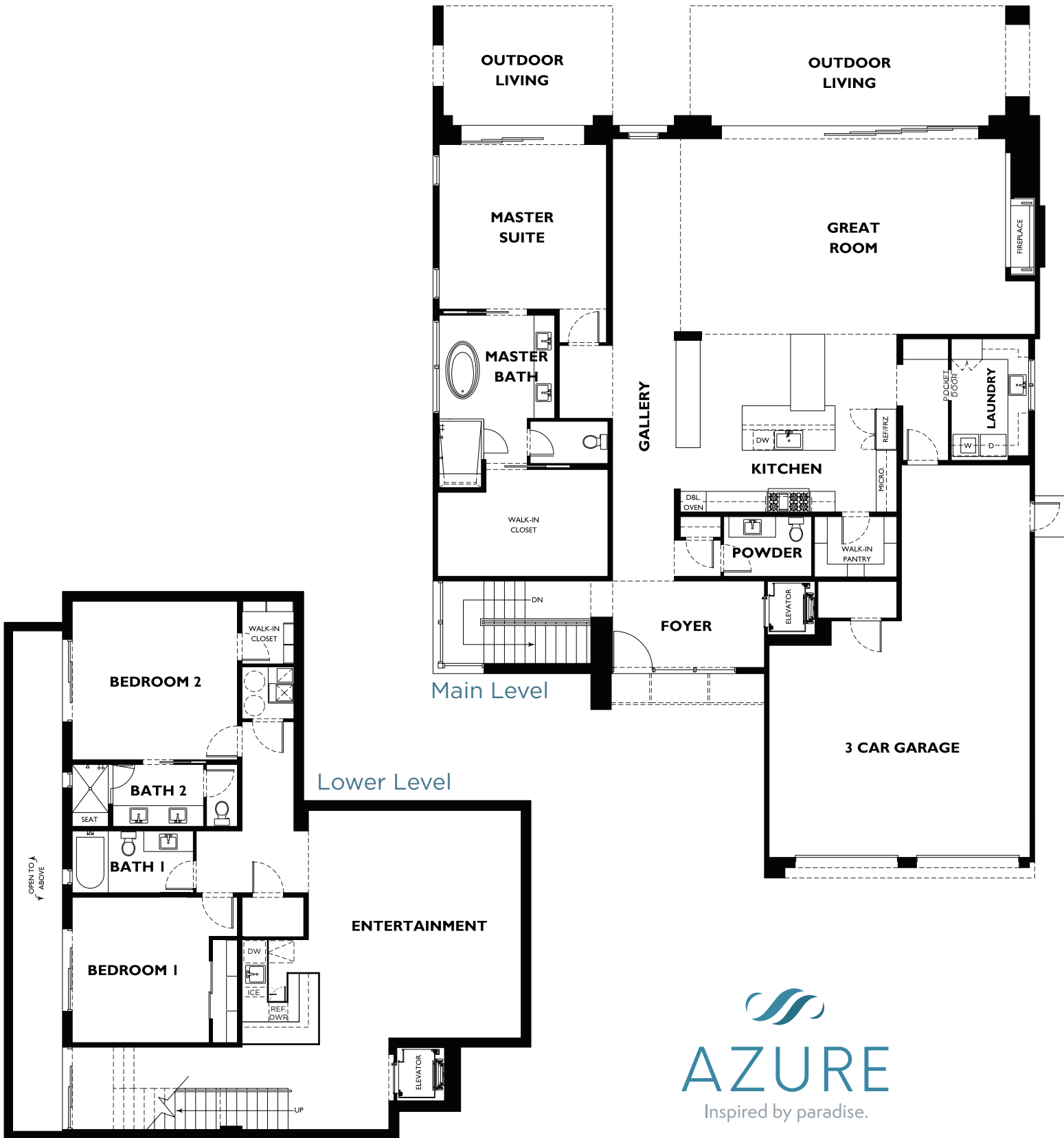
480.367.3675  
[azurepvliving.com](http://azurepvliving.com)



# HOMESITE 66

# RESIDENCE THREE

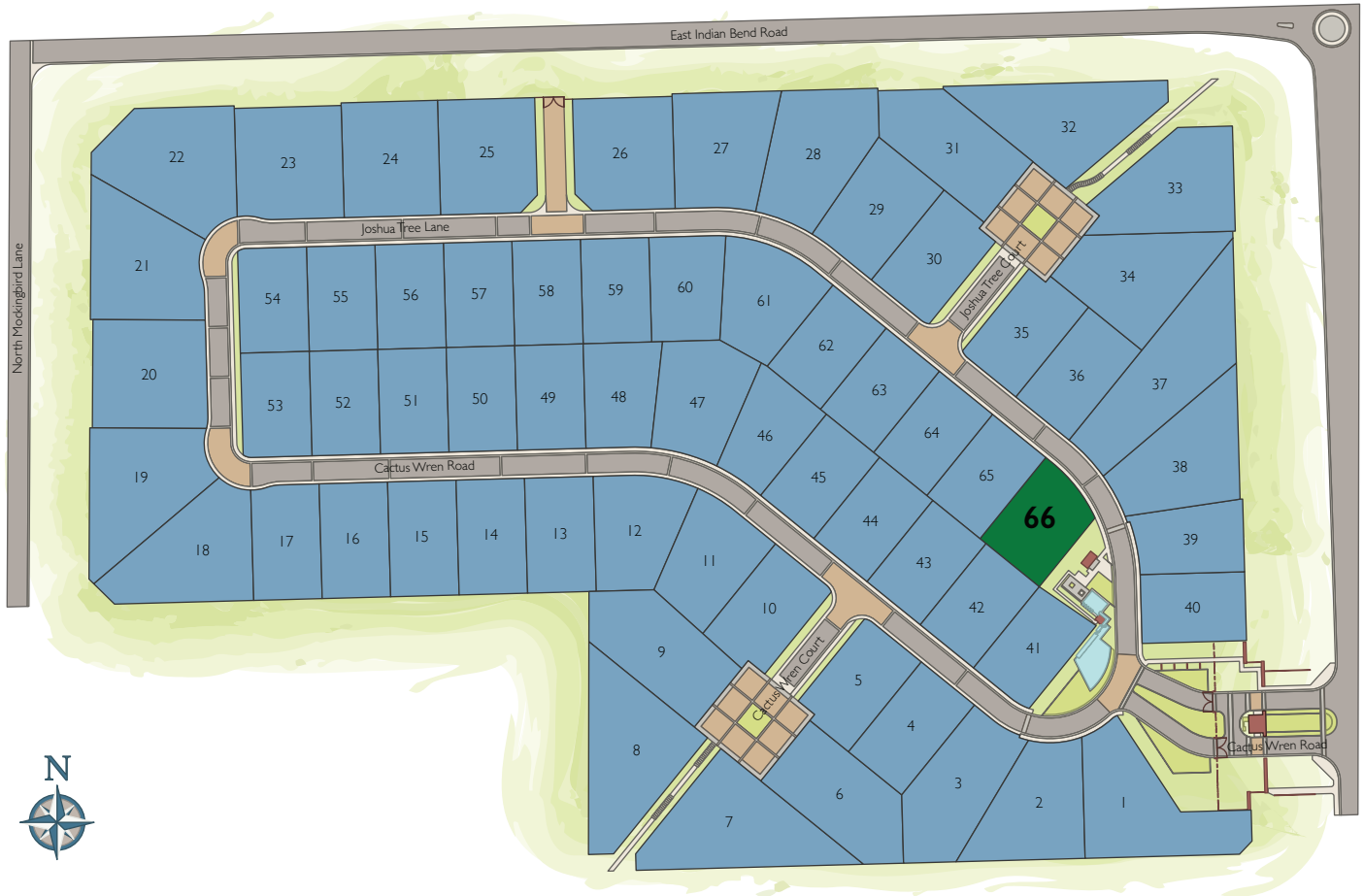
4,367 Sq. Ft. | 3 Bedrooms | 3 Full Baths + 1 Powder Room Bath | 3 Car Garage

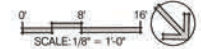
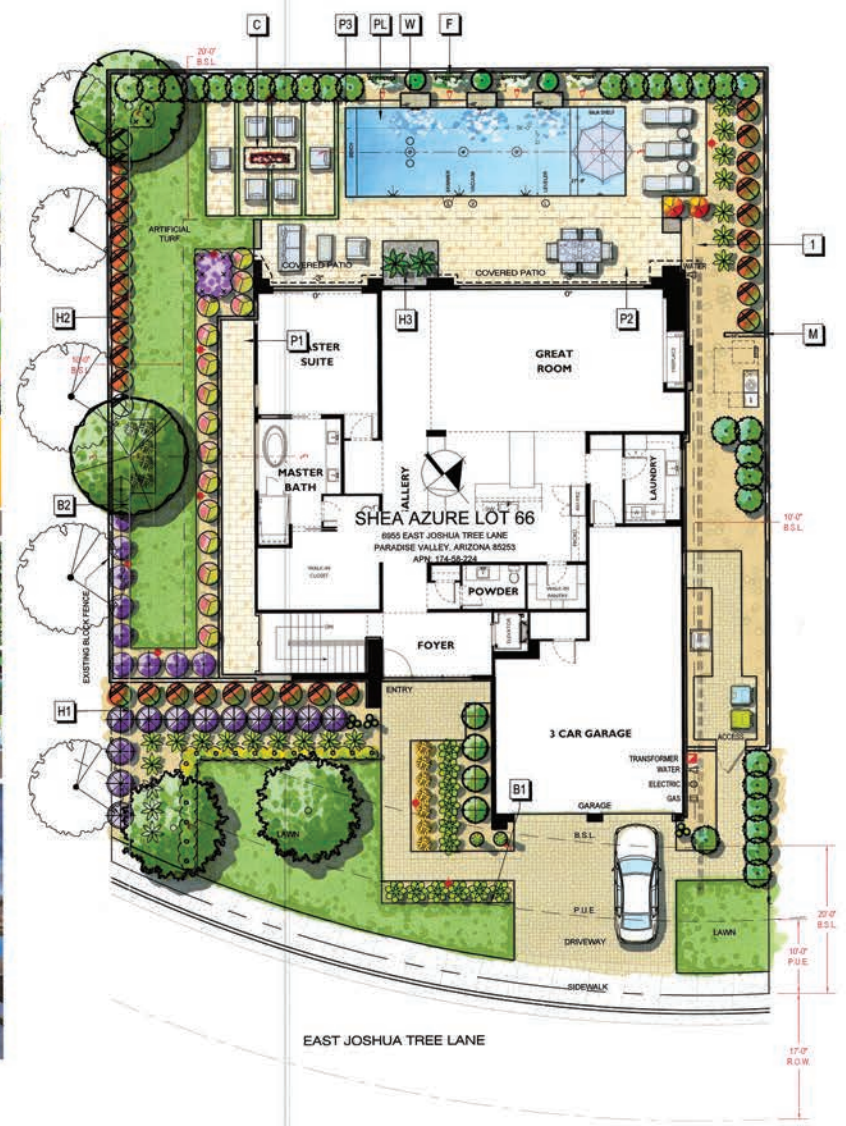


  
**AZURE**  
Inspired by paradise.

# HOMESITE 66

# RESIDENCE THREE





# Shea Azure - Lot 66

COPYRIGHT - THIS RENDERING AND ALL ASSOCIATED DOCUMENTS ARE PROTECTED BY COPYRIGHT. NO PART OF THIS DOCUMENT INCLUDING DESIGN MAY BE REPRODUCED, INSTALLED, OR TRANSMITTED IN ANY FORM OR BY ANY MEANS OR FOR ANY PURPOSE, WITHOUT WRITTEN PERMISSION OF CREATIVE ENVIRONMENTS.