



Azure, a Shea Signature™ community, is offered by The Solvare Group, LLC (AZ DRE #LC631297000) with construction by Shea Homes Limited Partnership (ROC #195895). This is not an offer for real estate for sale, nor solicitation of an offer to buy to residents of any state or province in which registration and other legal requirements have not been fulfilled. Developer may choose to utilize a Priority Reservation program before or after the Public Report has been issued. No sales will take place until the State Real Estate Department issues a Public Report, which will then be available on the State Real Estate Department Website. Models are not an indication of racial preference. Trademarks are property of their respective owners. Equal Housing Opportunity. ©2017 All rights reserved.

**DRAFT RENDERING FOR  
DISCUSSION PURPOSES ONLY**

# EXCEPTIONALLY DESIGNED RARE & COLLECTIBLE HOMES





## RESIDENCE 1

2 Bedroom, 2 Bathroom, 1 Powder Room

Approximately 3,816 sq.ft.

Optional Detached Casita | Approximately 576 sq.ft.

Optional Detached Garage | Approximately 576 sq.ft.



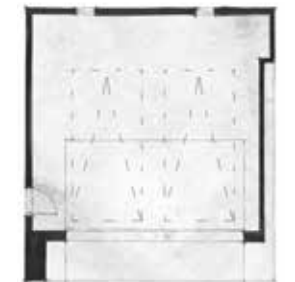
LOWER LEVEL



MAIN LEVEL



OPTIONAL CASITA



OPTIONAL GARAGE

## RESIDENCE 2

3 Bedroom, 3 Bathroom, 2 Powder Rooms

Approximately 4,150 sq.ft.

Optional with Enlarged Master | Approximately 4,663 sq.ft



LOWER LEVEL



MAIN LEVEL

## RESIDENCE 3

3 Bedroom, 3 Bathroom, 1 Powder Room

Approximately 4,370 sq.ft.

Optional Detached Casita | Approximately 345 sq.ft

Optional Upper Level | Approximately 602 sq.ft



## RESIDENCE 4

4 Bedroom, 3 Bathroom

Approximately 4,910 sq.ft.

Optional Detached Casita-Main Level | Approximately 430 sq.ft

Optional Detached Casita-Lower Level | Approximately 430 sq.ft

Optional Upper Level | Approximately 890 sq.ft



LOWER LEVEL



MAIN LEVEL

## RESIDENCE 5

3 Bedroom, 3 Bathroom, 2 Powder Room  
Approximately 5,256 sq.ft.



LOWER LEVEL



MAIN LEVEL





Azure, a Shea Signature™ community, is offered by The Solvere Group, LLC (AZ DRE #LC631297000) with construction by Shea Homes Limited Partnership (ROC #195895). This is not an offer for real estate for sale, nor solicitation of an offer to buy to residents of any state or province in which registration and other legal requirements have not been fulfilled. Developer may choose to utilize a Priority Reservation program before or after the Public Report has been issued. No sales will take place until the State Real Estate Department issues a Public Report, which will then be available on the State Real Estate Department Website. Models are not an indication of racial preference. Trademarks are property of their respective owners. Equal Housing Opportunity. ©2017 All rights reserved.

**DRAFT RENDERING FOR  
DISCUSSION PURPOSES ONLY**





Azure, a Shea Signature™ community, is offered by The Solvare Group, LLC (AZ DRE #LC631297000) with construction by Shea Homes Limited Partnership (ROC #195895). This is not an offer for real estate for sale, nor solicitation of an offer to buy to residents of any state or province in which registration and other legal requirements have not been fulfilled. Developer may choose to utilize a Priority Reservation program before or after the Public Report has been issued. No sales will take place until the State Real Estate Department issues a Public Report, which will then be available on the State Real Estate Department Website. Models are not an indication of racial preference. Trademarks are property of their respective owners. Equal Housing Opportunity. ©2017 All rights reserved.

**DRAFT RENDERING FOR  
DISCUSSION PURPOSES ONLY**



Azure, a Shea Signature™ community, is offered by The Solvere Group, LLC (AZ DRE #LC631297000) with construction by Shea Homes Limited Partnership (ROC #195895). This is not an offer for real estate for sale, nor solicitation of an offer to buy to residents of any state or province in which registration and other legal requirements have not been fulfilled. Developer may choose to utilize a Priority Reservation program before or after the Public Report has been issued. No sales will take place until the State Real Estate Department issues a Public Report, which will then be available on the State Real Estate Department Website. Models are not an indication of racial preference. Trademarks are property of their respective owners. Equal Housing Opportunity. ©2017 All rights reserved.

**DRAFT RENDERING FOR  
DISCUSSION PURPOSES ONLY**



Azure, a Shea Signature™ community, is offered by The Solvare Group, LLC (AZ DRE #LC631297000) with construction by Shea Homes Limited Partnership (ROC #195895). This is not an offer for real estate for sale, nor solicitation of an offer to buy to residents of any state or province in which registration and other legal requirements have not been fulfilled. Developer may choose to utilize a Priority Reservation program before or after the Public Report has been issued. No sales will take place until the State Real Estate Department issues a Public Report, which will then be available on the State Real Estate Department Website. Models are not an indication of racial preference. Trademarks are property of their respective owners. Equal Housing Opportunity. ©2017 All rights reserved.

**DRAFT RENDERING FOR  
DISCUSSION PURPOSES ONLY**



